

Badger Wind Project
Summary of Project Adjustments

Since Badger Wind, LLC (“Badger Wind”) filed its Application for an Amended Certificate of Site Compatibility Application (“Application”) with the North Dakota Public Service Commission (“PSC”) on February 23, 2024, Badger Wind has continued to gather information for, and coordinate with agencies and landowners on, the Badger Wind Project (“Project”). As a result, Badger Wind has made minor adjustments to the Project Area and layout. The minor adjustments to the Project Area and layout compared to what was filed with the Application are depicted in the Project Update Figure and updated Application Figures 1-13. Updated GIS data is being provided which includes the updates to the Project Area and layout.

Project Area

Since the Application was filed, Badger Wind determined that the leases on the following four parcels of land have expired and the Project Area has been updated to exclude these parcels:

- Two parcels (Parcels 1b and 1c) comprising approximately 20 acres in Section 5, Township 133N, Range 71W were originally under lease for the Project as part of a larger parcel. After the larger parcel was leased, Parcels 1b and 1c were sold to a different landowner (leaving Parcel 1a). The lease covering these parcels had an internal expiration date of December 31, 2022, and Badger Wind was unable to obtain a lease extension amendment with the landowner. While conducting a parcel-by-parcel check of the Project’s internal GIS lease data, Badger Wind identified that these parcels were incorrectly shown as participating. The internal GIS lease data has been updated, the parcels are excluded from the Project Area, the residence located on Parcel 1b is shown as nonparticipating, and collection lines have been rerouted to avoid these parcels.
- The lease for one parcel, Parcel 2 comprising approximately 159 acres in Section 10, Township 132N, Range 72W was acquired as part of the acquisition of a competitor’s holdings. At the time of Application filing, Badger Wind was pursuing a new lease with the landowner, but the landowner has since indicated it does not want to participate in the Project. As a result, the parcel is now non-participating and has been removed from the Project Area. All proposed facilities have also been removed from this parcel, and adjustments to turbine locations on the neighboring property have been made to ensure compliance with setback requirements. These adjustments are discussed further in the Project Layout section below.
- The lease for this one parcel, Parcel 3, (comprising approximately 145 acres) in Section 17, Township 132N, Range 71W had an internal expiration date of December 31, 2022, and Badger Wind was unable to obtain a lease extension amendment with the landowner. While conducting a parcel-by-parcel check of the Project’s internal GIS lease data, Badger Wind identified that this parcel was incorrectly shown as participating, and the internal GIS lease data was updated. No facilities were proposed on this parcel, and it has been removed from the Project Area.

While conducting a parcel-by-parcel check of the Project's internal GIS lease data, Badger Wind noted that three small parcels (Parcels 4, 5, and 6) were correctly identified and treated as non-participating in the internal GIS lease data (including for all setback purposes), but did not have the Project Area border around them on the figures submitted as part of the Application. The Project Area border has been added around these parcels.

As a result, the Project Area has been updated to show these parcels and the residence associated with Parcel 1b as nonparticipating. The same changes have been made in the updated Sound Analysis Report, updated Shadow Flicker Analysis Report, and updated Receptor Table. There are now approximately 34,896.6 acres in the Project Area.

Project Layout

As a result of the updates described above, the Project layout has been revised as follows:

- One turbine location (T97) has been removed, along with associated facilities (roads, collection, crane paths).
- Turbine T96B has been shifted to a new position (T96C) to comply with the setback from a now nonparticipating parcel, and associated facilities (roads, collection, crane paths) have been adjusted accordingly. Turbine T96C is located in cultivated land.
- Collection lines have been rerouted to avoid Parcels 1b and 1c.

Additionally, Badger Wind has made the following adjustment:

- The location of the access road to permanent met tower (MET 1) was adjusted to avoid impacting a wetland.

The Project now includes 102 potential wind turbine locations, of which, up to 93 wind turbines will be constructed. The Project layout complies with all applicable setback and sound requirements, as well as Badger Wind's voluntary shadow flicker commitments.

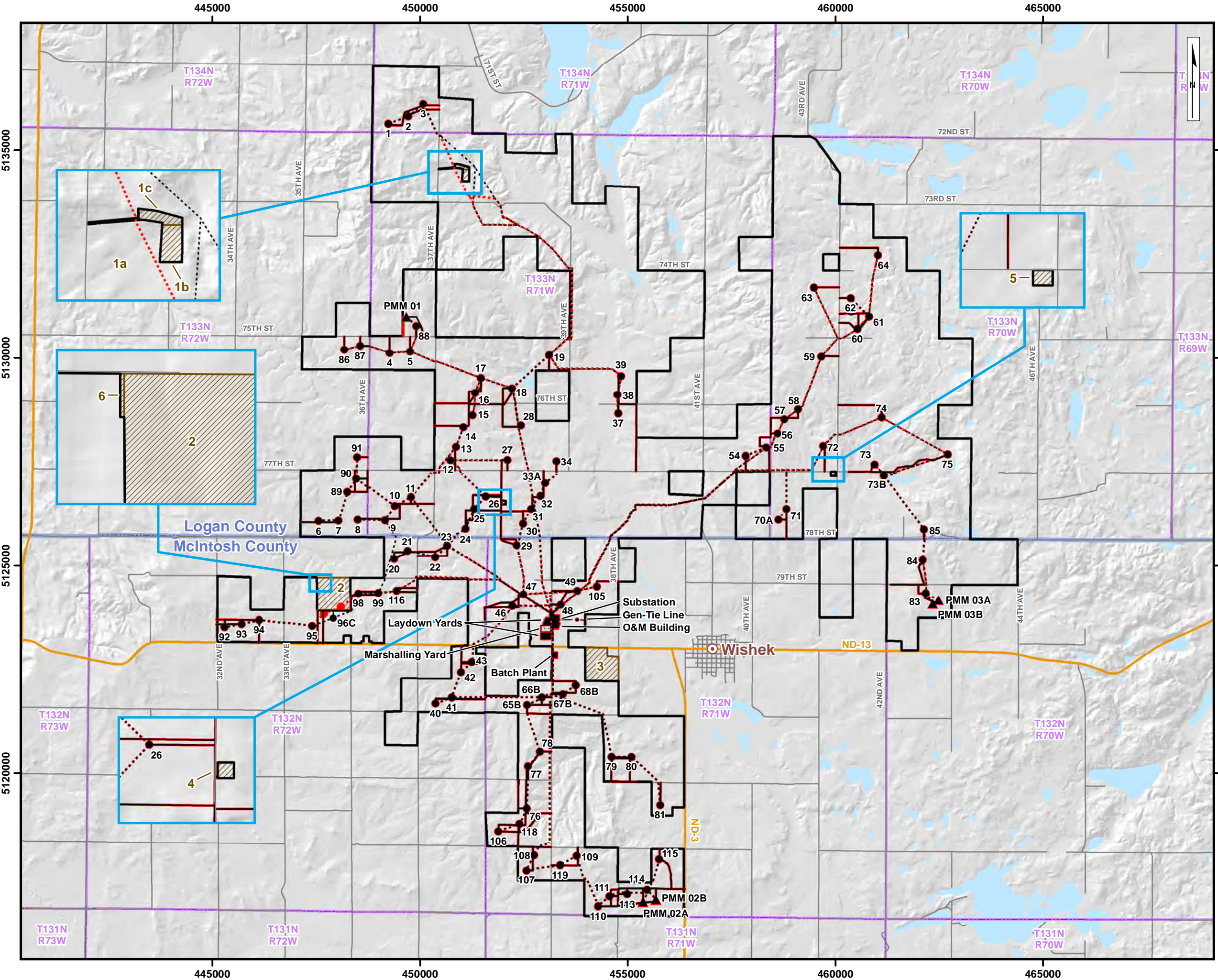
Notable changes in impacts are described as follows. The changes to the current layout impact numbers compared to the previous layout impact numbers result in an overall similar footprint of facilities. Notable changes include relocation of an access road that eliminated a permanent impact to a wetland. Overall, the change in impacts is minor; actual impacts will depend on the turbines constructed. Calculations are based on all proposed turbine locations; however, since only up to 93 turbines will be constructed, the actual temporary and permanent impacts will be less.

Table 4-2: Summary of Temporary and Permanent Footprints from Project Facilities (acres) <i>Revised May 2024</i>					
Project Facility	Description of Footprint	February 2024 Layout		Current Layout ¹	
		Temporary Impacts (acres)	Permanent Impacts (acres)	Temporary Impacts (acres)	Permanent Impacts (acres)
Turbines	102 (previously 103) turbine locations (includes 9 alternates (previously 10)), 50-ft radius turbine pad, 250-ft radius temporary construction workspace	359.7	18.5	355.6	18.3
Access Roads	16-ft-wide road, 100-ft-wide temporary construction workspace	263.3	105.5	263.6	105.6
Crane Paths	100-ft-wide temporary disturbance area	358.2	0.0	359.7	0.0
Electrical Collection and Communication Lines	75-ft-wide corridor for collection lines	632.2	0.0	645.7	0.0
ADLS	0.5-acre ADLS tower site	0.4	0.1	0.4	0.1
MET Towers	Five possible locations are included, but only three permanent MET towers will be constructed; each MET tower location has a 50-sq ft permanent disturbance area and an associated 0.5-acre temporary disturbance area.	0.8	0.01	0.8	0.00
Project Facilities	Includes laydown/staging/marshalling areas, O&M facility, batch plant, substation footprints	36.8	3.8	36.8	3.8
Total		1,651.4	127.8	1,662.6	127.8

¹ Because the Project has collocated facilities, double counting of potential impacts has been accounted for by first calculating permanent impacts, then calculating temporary impacts from electrical collection and communication lines (ground disturbance), then turbine workspace, crane paths, access roads, facility footprints and MET towers.

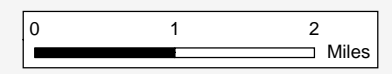
Table 6-3: Project Summary of Land Cover Impacts
Revised May 2024

Land Cover Type	Impacts			
	February 2024 Layout		Current Layout	
	Temporary (acres)	Permanent (acres)	Temporary (acres)	Permanent (acres)
Open Water	0.0	0.0	0.0	0.0
Developed	101.5	13.9	102	13.7
Barren Land (Sand, Rock, Clay)	0.0	0.0	0.0	0.0
Deciduous Forest	0.0	0.0	0.0	0.0
Shrub/Scrub	7.4	0.2	7.4	0.2
Grassland/Herbaceous	383.7	19.3	395.9	19.6
Pasture/Hay	45.0	2.6	44.5	2.6
Cultivated Crops	1,108.2	91.8	1,106.5	91.7
Woody Wetlands	0.0	0.0	0.0	0.0
Emergent Herbaceous Wetlands	5.6	0.0	6.3	0.0
Total	1,651.4	127.8	1,662.6	127.8
Source: (USGS 2021)				



Legend

- Current Layout
- February 2024 Layout
- Current Project Area
- Project Area (Removed Since February 2024)
- County
- Township (PLSS)
- State Road
- County/Township Road



Orsted
Badger Wind, LLC

Figure 14:
MAY 2024 UPDATE MAP
- Wind Energy Facility -
Logan County, ND

10455420-240513-PV
May 13, 2024
Projection: NAD83 UTM14
Sources: ESRI, USGS

DNV